



Distributed by: **ADVISAINS**

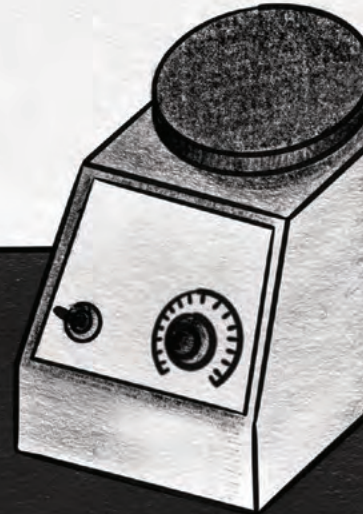
Advisains will become the most reputable science innovation group, accelerating Indonesia scientific and technology industry growth end-to-end, from manufacturing, processing, analytical, diagnostic, and therapeutic.



ADVISAINS.ID | info@advisains.id | +62 817-9154-607

chemiSOLO

Personal Western Blot Imager



Highly Sensitive Imaging

Femtogram detection of chemiluminescent Westerns



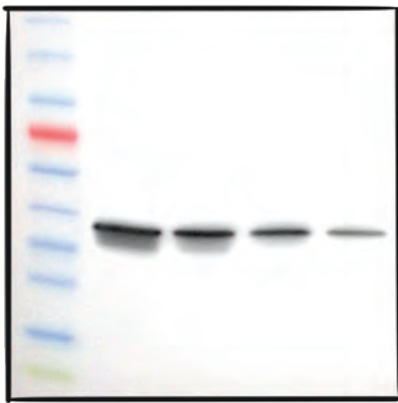
Unique Software

Capture and download images instantly from any device.

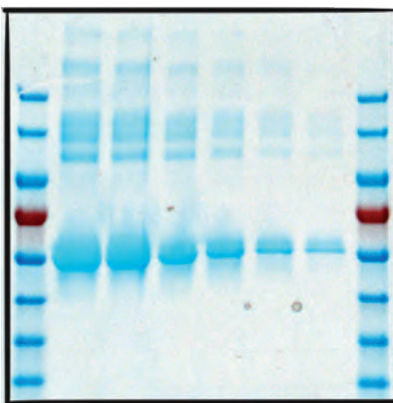


Flexible Imaging Options

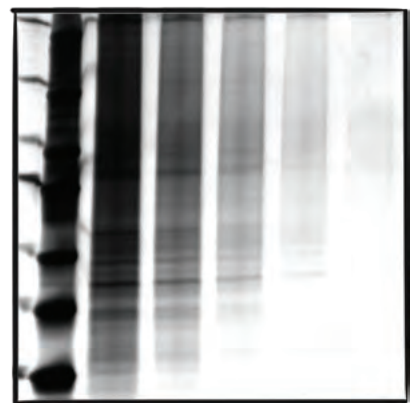
Chemiluminescent blots, colorimetric SDS PAGE gels, colorimetric blots, color marker, densitometry



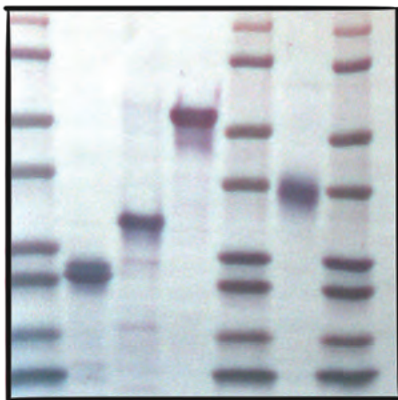
Chemiluminescent Blot with Color Marker



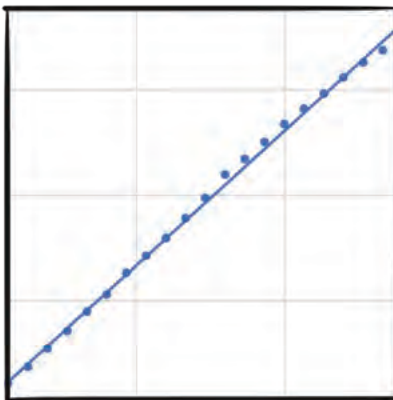
Coomassie Stained Protein Gel



Silver Stained Protein Gel



Colorimetric Stained Blot



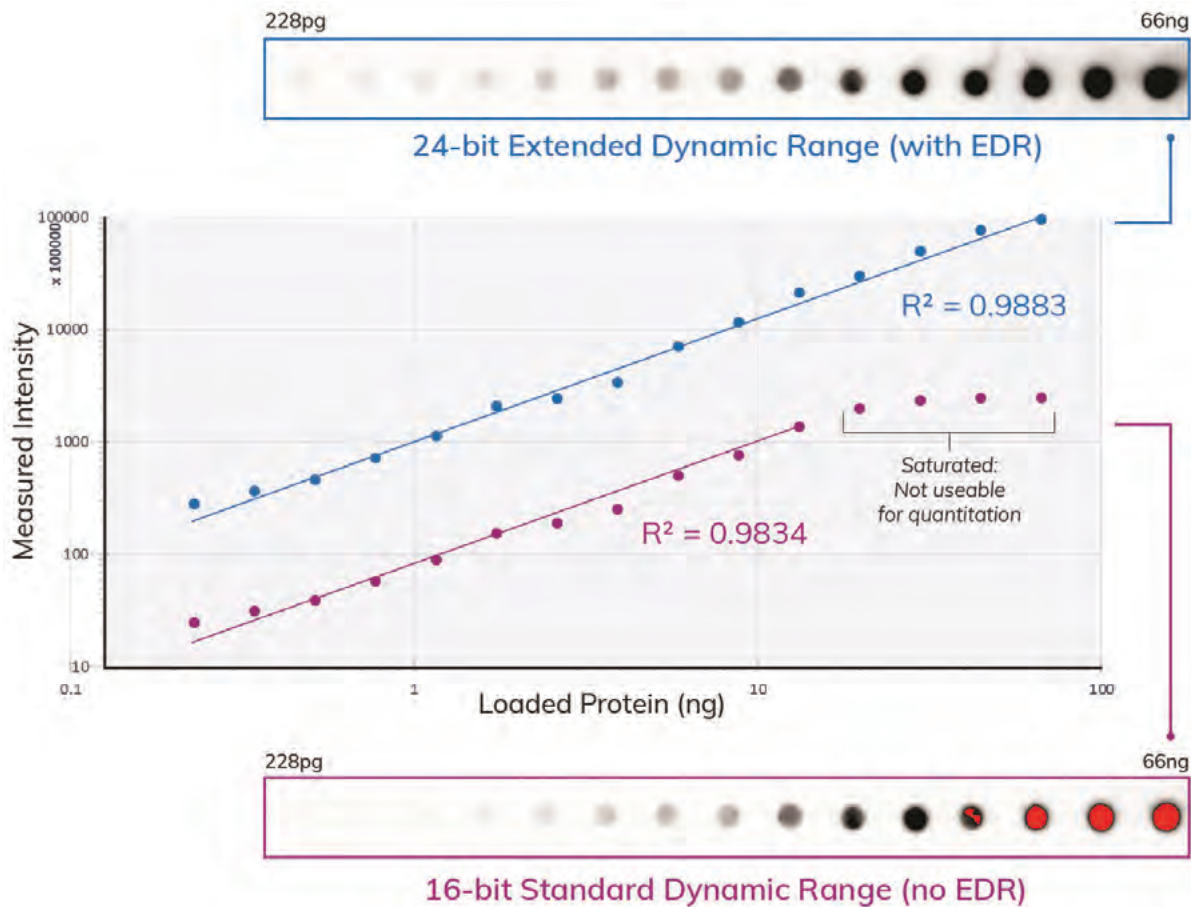
Densitometry



Plant Bioluminescence

Quantitative Data Acquisition

chemiSOLO's Extended Dynamic Range linearly detects wider ranges without saturation.



Scan for more information on
chemiSOLO's quantitative imaging



Advanced Technology



Embedded LEDs

Used for capturing marker and colorimetric gel images

Two USB Ports

Used for Internet connection or direct data transfer

One Ethernet Port

Used for direct connection via Ethernet cable

Imaging Stage

Field of View: 10.0 x 15.0 cm (4.0 x 5.9 in)

6.29 MPx Camera

Powerful back-illuminated Peltier-cooled CMOS camera

Browser-Based Software

Unique Wi-Fi signal allows the chemiSOLO to be controlled by any device with Wi-Fi connectivity and a browser

Space-efficient Design

Darkroom

At least 8 x 6ft



Gel Tank and Power Supply

16.5 x 22 x 13in
42 x 56 x 33cm

chemiSOLO

11.5 x 17 x 8.75in
29.2 x 43.2 x 22.2cm

Microwave

22 x 15 x 18in
56 x 38 x 45cm

chemiSOLO	Specifications
Part Number	CS1000
Camera	6.29MPx back-illuminated CMOS, 16-bit, 65,536 grayscale
Peltier Cooling	-40C regulated cooling from ambient
Applications	Chemiluminescent Imaging with Visible Marker, Densitometry, Visible Gel Imaging in Color and Grayscale
Light Source	LEDs
Field of View	10 x 15 cm (4.0 x 5.9 in)
Footprint (W x H x D)	29.2 x 22.2 x 43.2 cm (11.5 x 8.75 x 17.0 in)
Weight	9.1kg (20lbs)
Certifications	CE RED, cTUVus, CB scheme, RoHS

Distributed by: **ADVISAINS**

Advisains will become the most reputable science innovation group, accelerating Indonesia scientific and technology industry growth end-to-end, from manufacturing, processing, analytical, diagnostic, and therapeutic.

ADVISAINS.ID | info@advisains.id | +62 817-9154-607



information
chemiSOLO



6747 Sierra Court, Suites A-B • Dublin, CA 94568 USA
 Phone: 925.307.7127 • Fax: 925.905.1816
 info@azurebiosystems.com • www.azurebiosystems.com

Copyright © 2022 Azure Biosystems. All rights reserved. The Azure Biosystems logo and Azure Biosystems® are trademarks of the Company. All other trademarks, service marks and trade names appearing in this brochure are the property of their respective owners.

MM-0087 Rev2