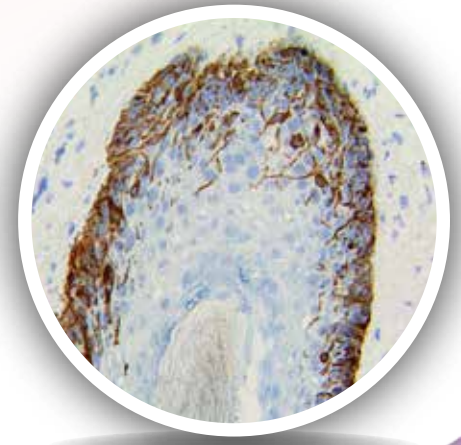
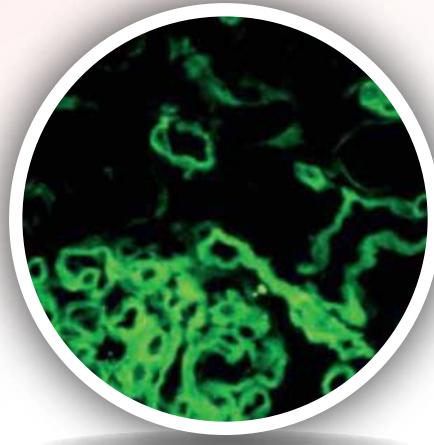
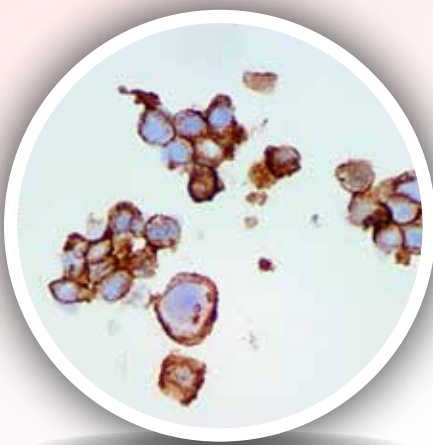


# BIO SB TINTODETECTOR MINI IMMUNO SYSTEM

Compact System for Immunocytochemistry, Immunofluorescence and Immunohistochemistry



*Perform Immunohistochemistry (IHC), Immunocytochemistry (ICC), and Immunofluorescence (IF) in one easy to use open platform.*

The Bio SB TintoDetector Mini is a compact molecular pathology system which allows for the full implementation of immunohistochemical (IHC), Immunocytochemistry (ICC) and Immunofluorescence (IF) protocols. Ideal for use in diagnostic or research laboratories looking for a cost-effective, semi-automated and open platform.

The Bio SB TintoDetector system consists of a durable stainless steel housing, TintoDetector Slide Handle, four solution dishes, 5 30-well reagent holders and 1 package of TintoDetector Pads. With a compact footprint, ease of use and versatility, the TintoDetector offers flexible protocol implementation at a competitive price.

### TintoDetector Solution Dishes

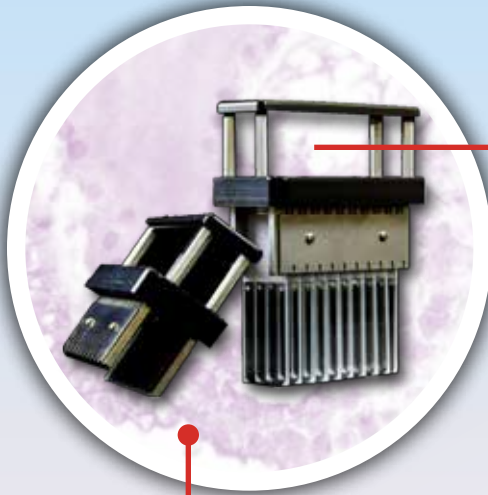
- Store alcohols, buffers, counterstains, xylenes, or other solutions.
- Hold up to four 200 mL solutions which are easily and rapidly removed from unit.

### 30-Well Reagent Holders

- Provided with five 30-well reagent holders.
- Apply up to 200µl of reagent per well



Product Description	Catalog #
TintoDetector Mini Complete System	BSB 7085
TintoRetriever Pressure Cooker	BSB 7015
TintoDetector Slide Holder for Cap Gap Slides	BSB 7003
TintoDetector 30-well Reagent Holder, Pack of 5	BSB 7004
TintoDetector Absorbent Pads, Box of 10	BSB 7036
TintoDetector Cap Gap Plus Slides, Box of 72	BSB 7006
TintoDetector (Full Size) Complete System Bundle with Incubator	BSB 7000



## TintoDetector Slide Handle

- Functions with TintoDetector Cap Gap Slides.
- Durable stainless steel construction.
- Holds 20 paired slides in one handle.
- Handle fits into incubator unit for easy implementation of Immunohistochemistry (IHC), Immunocytochemistry (ICC) and Immunofluorescence (IF) protocols.

## Stainless Steel Workstation

- Stainless steel construction ensures durability.
- Small footprint (12" x 12"). Lightweight design for easy installation or relocation.



## TintoDetector Mini Accessories



**TintoDetector Pads (BSB 7036)**  
Absorbent pads for use in reagent washes



**TintoDetector Cap Gap Plus Slides (BSB 7006)**  
Box of 72 Slides



**Bio SB TintoRetriever (BSB 7008)**  
Cost effective epitope retrieval



The Bio SB TintoDetector Mini Immuno System was developed in conjunction with Bio SB's TintoFast antibodies and detection systems for Fast Mohs IHC. The Bio SB Fast Mohs IHC products are a system of highly sensitive non-biotin monovalent Fab micropolymer IHC detection kits and TintoFast IVD antibodies for melanoma, BCC, SCC and other Mohs surgery related conditions. Our innovative IHC detection systems and high affinity monoclonal antibodies, have opened the doors for a faster and accurate immunohistochemistry applicable to Mohs surgery. Using the TintoDetector Mini's small footprint allows the user to utilize a small lab space to perform Fast Mohs IHC.

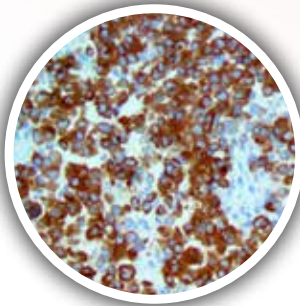
<b>BCC, SCC and Lymphoepithelioma-like Carcinoma Antibodies</b>	
Cytokeratin 5/6	DB5/16B4
Cytokeratin Cocktail, AE1 & AE3	AE1/AE3
Cytokeratin MNF116	MNF116
EpCAM BerEP4	Ber-EP4

<b>Dermatofibrosarcoma Protuberans (DFSP) Antibodies</b>	
CD34	QBEND/10

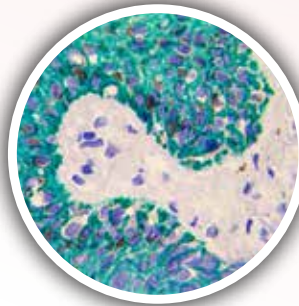
<b>Melanoma Antibodies</b>	
MART-1	A103
MiTF	C5/D5
SOX-10	BSB-62

<b>Mucinous Carcinoma Antibodies</b>	
Cytokeratin CAM5.2	CAM5.2

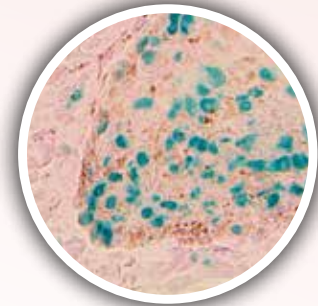
<b>Paget's Disease Antibodies</b>	
Cytokeratin 7	OV-TL12/30



**MART-1 using Fab DAB HRP Brown on a Frozen Mohs Melanoma**

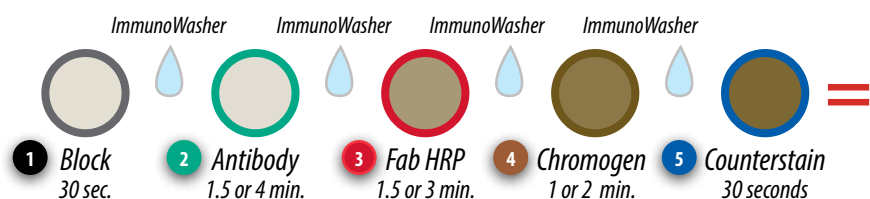


**CK AE1 / AE3 using Fab HRP Green on a Frozen Mohs Melanoma**



**SOX-10 using Fab HRP Green on a Frozen Mohs Melanoma**

## Fast Mohs Fab PolyDetector HRP Protocol



**5-10 Minute IHC!**