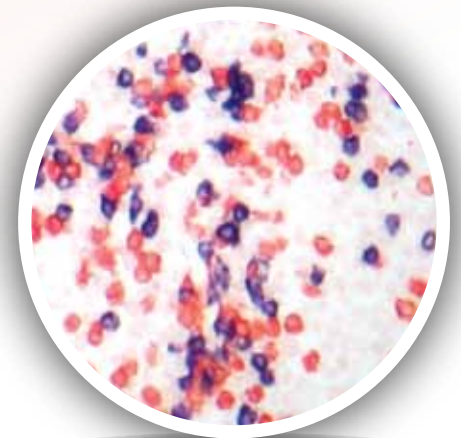
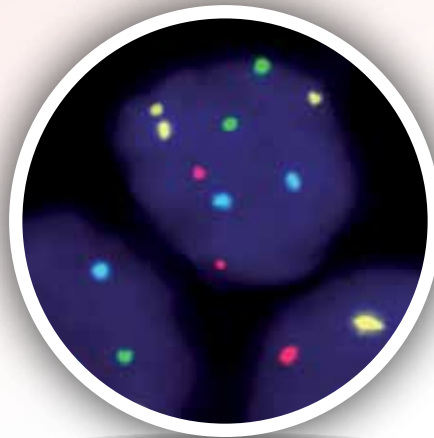
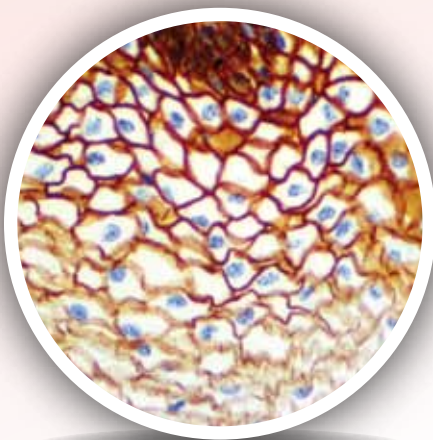


# BIO SB TINTODETECTOR IMMUNODNA SYSTEM

---

Compact System for Molecular Pathology



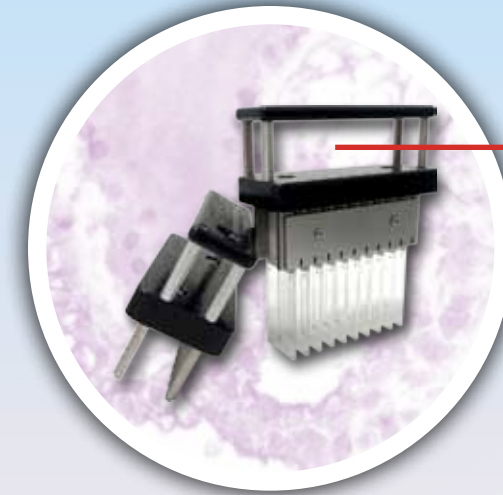
---

*Perform Immunohistochemistry (IHC), Immunocytochemistry (ICC),  
Immunofluorescence (IF) and In-situ Hybridization (ISH)  
in one easy to use open platform.*

## TintoDetector ImmunoDNA System

The Bio SB TintoDetector is a compact molecular pathology system which allows for the full implementation of immunohistochemical (IHC), Immunocytochemistry (ICC), Immunofluorescence (IF) and *in-situ* hybridization (ISH) protocols. Ideal for use in diagnostic or research laboratories looking for a cost-effective, semi-automated and open platform.

The Bio SB TintoDetector system consists of a durable stainless steel housing, eight solution dishes, incubator unit (for reagent incubation, nucleic acid denaturation, probe hybridization and stringency washes), and 30-well reagent holders. With a compact footprint, ease of use and versatility, the TintoDetector offers flexible protocol implementation at a competitive price.



### TintoDetector Slide Handle

- Functions with TintoDetector Cap Gap Slides.
- Durable stainless steel construction.
- Holds 20 paired slides in one handle.
- Handle fits into incubator unit for easy implementation of Immunohistochemistry (IHC), Immunocytochemistry (ICC), Immunofluorescence (IF) and *In-situ* Hybridization (ISH) protocols.

### TintoDetector Incubator

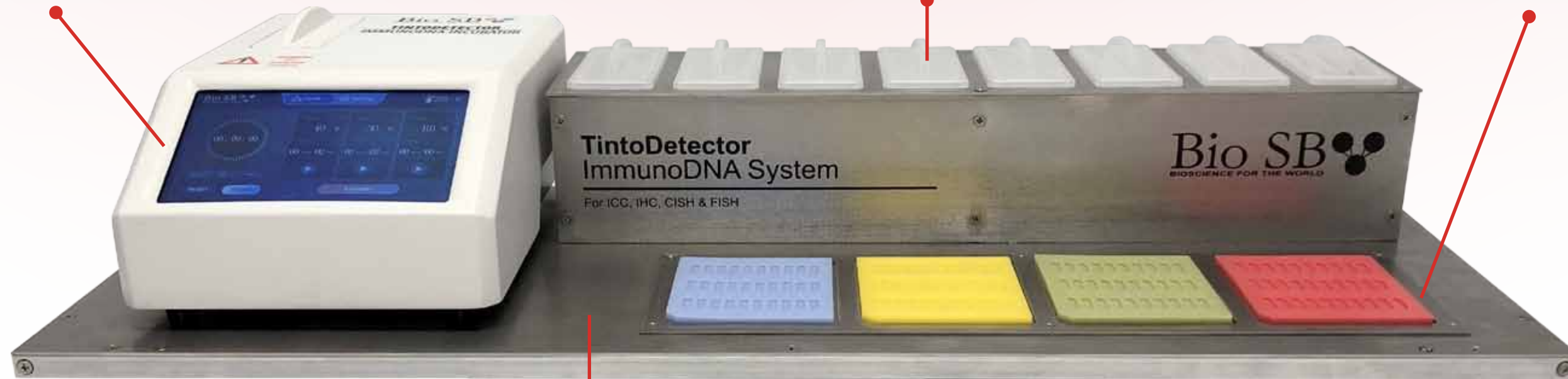
- Allows for implementation of a variety of IHC, ICC, IF and ISH protocols
- Incubator ensures rapid and consistent heat application of up to 110°C.
- 3 programmable temperature presets.
- Humidity chamber prevents evaporation of reagent.

### TintoDetector Solution Dishes

- Store alcohols, buffers, counterstains, xylenes, or other ancillaries.
- Hold up to eight 200 mL solutions which are easily and rapidly removed from unit.

### 30-Well Reagent Holders

- Storage of four 30-well reagent holders.
- Apply up to 200µl of reagent per well



Product Description	Catalog #
TintoDetector Complete System (with Incubator)	BSB 7000
TintoDetector Staining System (without Incubator)	BSB 7001
TintoDetector Incubator	BSB 7002
TintoDetector Slide Holder for Cap Gap Slides	BSB 7003
TintoDetector 30-well Reagent Holder, Pack of 5	BSB 7004
TintoDetector Absorbent Pads, Box of 10	BSB 7036
TintoDetector Cap Gap Plus Slides, Box of 72	BSB 7006

### Stainless Steel Workstation

- Stainless steel construction ensures durability.
- Small footprint for easy installation or relocation.

### TintoDetector Accessories



**TintoDetector Pads (BSB 7036)**  
Absorbent pads for use in reagent washes



**30-Well Reagent Holders (BSB 7004)**  
Apply up 200µl of reagent per well

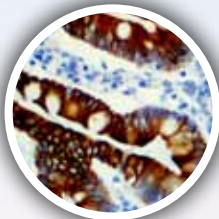


**Bio SB TintoRetriever (BSB 7008)**  
Cost effective epitope retrieval

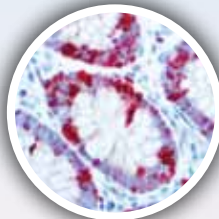


## IHC Immunohistochemistry

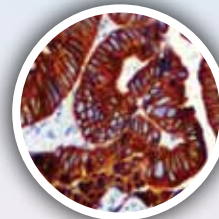
Utilize the TintoDetector in immunohistochemistry (IHC) applications to rapidly implement a protocol while minimizing reagent use (as little as 50 µl per slide). Bundle the TintoDetector with Bio SB Tinto Predilutes and detection systems to ensure standardized results at a competitive price.



**HER-3 R Mab**  
**Colon Carcinoma**



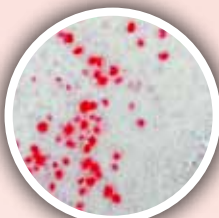
**Ki-67 R Mab**  
**Colon Tissue**



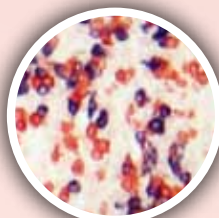
**CK8 & CK18 R Mab**  
**Colon Carcinoma**

## CISH Chromogenic *In-situ* Hybridization

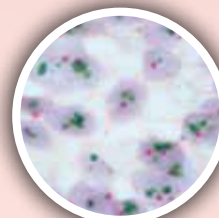
Use the TintoDetector and built-in incubator for CISH DNA/RNA denaturation, probe hybridization, stringency and detection. The TintoDetector is optimized to work with CISH kits that require rapid or overnight probe hybridization.



**HPV Probe**  
**Condyloma**



**Kappa-Lambda**  
**B-cells**



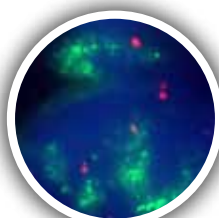
**HER2/CEN17**  
**Gastric Carcinoma**

## FISH Fluorescent *In-situ* Hybridization

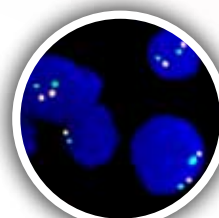
Use the TintoDetector for easy implementation of Fluorescent in-situ hybridization (FISH) technology into your clinical or research laboratory. The TintoDetector can be utilized with single, dual, triple, and quadruple color FISH probes.



**ALK/EML4**  
**Lung Carcinoma**



**MDM2/CEN12**  
**Liposarcoma**



**MET/CEN17**  
**Normal Cells**